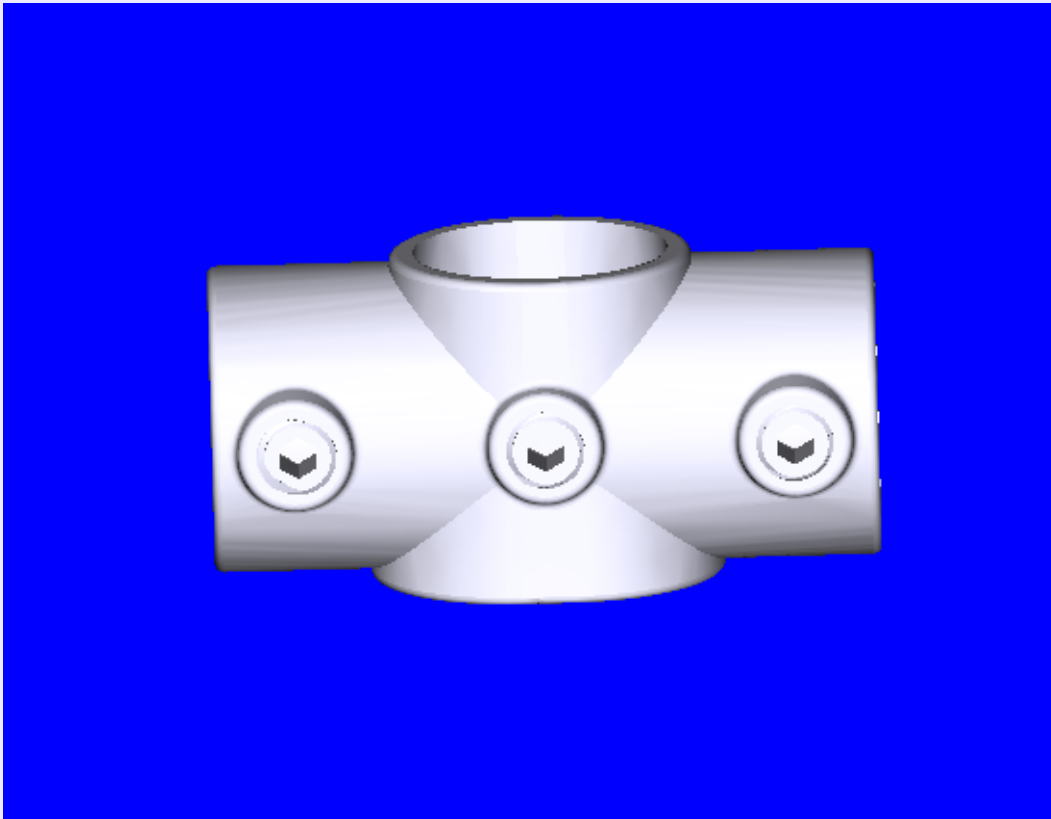


# 3D MasterKlamp Image

## Description:

The two socket cross  $0^{\circ}$  to  $11^{\circ}$  gives a variable joint angle between two pipe lengths from  $0^{\circ}$  to  $11^{\circ}$ . Often used together with MasterKlamp product types 1.03 or 1.06 for the top rail and the 4.05 for the rail base flange.

*Instructions: move pointer over image, right click and drag to rotate*



## Available sizes:

2.11.34  
2.11.42  
2.11.48

Note: Sizes given are the outside diameter (OD) pipe sizes that the clamp suits. A conversion table from OD to NB is shown below.

<u>OD (mm)</u>	<u>NB (mm)</u>
34	25
42	32
48	40

**Name: MasterKlamp Two Socket Cross  $0^{\circ}$  to  $11^{\circ}$**

**Code: 2.11.\_\_\_\_**

Additional MasterKlamp information available from [www.masterklamp.com](http://www.masterklamp.com)

**MASTERKLAMP**