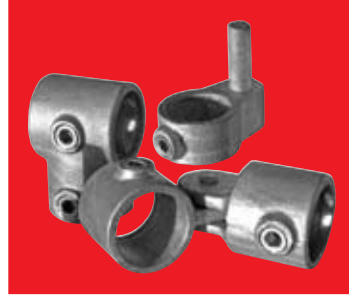


MASTERKLAMP.

 versatile

 wide range

 durable



HIGH QUALITY PIPE FITTINGS

Designed for simple, rapid assembly
of tubular structures

www.masterklamp.com



- CANOPIES
- MARKET STALLS
- STORAGE RACKS
- WORK BENCHES
- EXHIBITION STANDS
- CATTLE PENS
- & MANY MORE . . .

The **MASTERKLAMP** range comprises some 58 fittings available to suit 6 pipe sizes from 21.3mm to 60.3mm O.D.



■ Quick assembly is just one of the benefits of using Masterklamp



■ Hot-dipped galvanised in accordance with ISO1461



■ Unobtrusive locking mechanism with an easy to use allen key

Manufactured to ISO 9002 standards, **MASTERKLAMP** fittings are made from malleable cast-iron or aluminium and are precision machined to slip snugly over piping.

MASTERKLAMP malleable cast-iron fittings are hot-dipped galvanised in accordance with ISO 1461 to enhance durability in even the most unforgiving outdoor environments. Where required **MASTERKLAMP** fittings can be powder coated in your choice of colour.

Every **MASTERKLAMP** fitting can be quickly locked to the pipe with a set screw and allen key.

www.masterklamp.com

MASTERKLAMP

HIGH QUALITY PIPE FITTINGS

The **MASTERKLAMP** range of pipefittings is a perfect blend of superior engineering and great design.

- HANDRAILS
- GUARDRAILS
- CAR PORTS
- GARMENT RACKS
- GREEN HOUSES
- BARRIERS
- FRAMES

Strength and durability combined with ease-of-use!

A versatile system that eliminates the need for welding, bending or threading. It allows you to quickly erect any variety of pipe frame structures, no matter how complex your design.

The **MASTERKLAMP** range features a wide selection of clamps designed for every conceivable pipe frame configuration. The clamps have multiple applications in diverse industries.

MASTERKLAMP:
meets your needs!



■ Durability in even the most demanding of environments



■ All fittings can be powder coated in your colour choice



■ Complex indoor or outdoor structures can be quickly built

ELBOWS & FLANGES

3.01 Elbow 90°



21.3	26.9	33.7	42.4	48.3	60.3

3.02 Elbow 79-101°



		33.7	42.4	48.3	

3.03 Variable Elbow 30-60°



		33.7	42.4	48.3	

Manufactured to ISO 9002 standard

4.01 Base Flange



	26.9	33.7	42.4	48.3	60.3

4.02 Railing Base Flange



	26.9	33.7	42.4	48.3	60.3

4.03 H Base Railing Support



		33.7	42.4	48.3	

4.04 V Base Railing Support



		33.7	42.4	48.3	

4.05 Railing Base flange 0-11°



		33.7	42.4	48.3	

4.06 Handrail Support



	26.9	33.7	42.4	48.3	

4.08 Rail Base with Toeboard



			42.4	48.3	

4.09 Side Base Rail Support



				48.3	

4.10 Base Plate



Universal					

4.11 Swivel Base



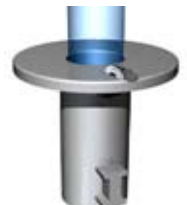
	26.9	33.7	42.4	48.3	60.3

4.13 Side Palm



		33.7	42.4	48.3	

4.18 Ground Socket



		33.7	42.4	48.3	

4.20 Sgl Sided Collar Plate



		33.7	42.4	48.3	

4.21 Dbl Sided Collar Plate



			42.4	48.3	

KEY

AVAILABLE IN ALUMINIUM

26.9 Available in NON-REDUCING pipe sizes

42.4/48.3 Available in REDUCING pipe sizes:

For reducing clamps Thru, then Butt
e.g. 42.4/48.3 (42.4 = Thru, 48.3 = Butt)

All sizes given in (to suit) outside diameter (OD)mm.



SWIVELS & VARIOUS

5.01 Male Single Swivel



	26.9	33.7	42.4	48.3	60.3

5.02 Male Double Swivel



	26.9	33.7	42.4	48.3	

5.03 Male Corner Swivel



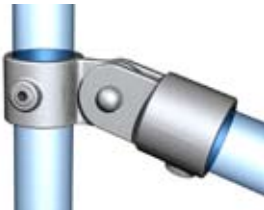
	26.9	33.7	42.4	48.3	

5.09 Female Sgl Swivel



	26.9	33.7	42.4	48.3	60.3

5.11 Sgl Swivel Combi



	26.9	33.7	42.4	48.3	60.3

5.12 Dbl Swivel Combi



	26.9	33.7	42.4	48.3	

5.13 Cnr Swivel Combi



	26.9	33.7	42.4	48.3	

Strength & durability combined with ease-of-use!

6.01 Straight Coupling



	26.9	33.7	42.4	48.3	60.3

6.03 Internal Coupling



		33.7	42.4	48.3	

6.04 Hook



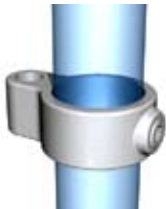
		33.7	42.4	48.3	

6.06 Collar



	26.9	33.7	42.4	48.3	

6.08 Female Gate Hinge



	26.9	33.7	42.4	48.3	

6.09 Male Gate Hinge



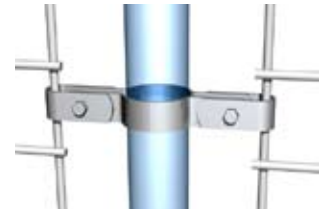
	26.9	33.7	42.4	48.3	

6.14 Sgl Sided Panel Clip



			42.4	48.3	60.3

6.15 Dbl Sided Panel Clip



			42.4	48.3	60.3

6.20 Set Screw



3/8	1/4	1/4	3/8	3/8	3/8
BSF	BSP	BSP	BSP	BSP	BSP

6.21 Allen Key



Stainless Steel or Dacromet treated (ASTM 1045)

3/16	1/4	1/4	5/16	5/16	5/16

KEY

AVAILABLE IN ALUMINIUM

26.9 Available in NON-REDUCING pipe sizes

42.4/48.3 Available in REDUCING pipe sizes:

For reducing clamps Thru, then Butt
e.g. 42.4/48.3 (42.4 = Thru, 48.3 = Butt)

All sizes given in (to suit) outside diameter (OD)mm.

ASSIST (DDA)

Assist A.7.01.42



				48.3	

Assist A.7.02.42



				48.3	

Assist A.7.03.42



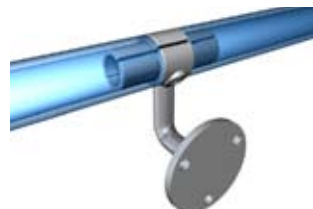
				48.3	

Assist A.7.04.42



				48.3	

Assist A.7.05.42



				42.4	

Assist A.7.06.42



				42.4	

GENERAL

All MASTERKLAMPS can be installed without specialist skills or equipment. No welding or threading is required, just hand tighten (40NM) each set screw with an allen (hex) key to provide a secure connection between the pipe and the MASTERKLAMP. In fact each tightened grub screw offers a minimum of 940kgs of slip resistance.

All MASTERKLAMP codes are given to suit outside diameter pipe measurements.

MASTERKLAMP ASSIST HANDRAIL SOLUTIONS:

MasterKlamp is a long term, quick to install handrail solution that complies with the Disability Discrimination Act (DDA) and applicable building regulations.

The MasterKlamp Assist products are available in 6 variants allowing for a smooth connection between the fitting and the pipe. This is an essential requirement in terms of compliance to DDA. The Assist range has been designed to suit 42.2mm, 3.2mm wall thickness (32mm NB, medium wall) pipe.

All of the MasterKlamp assist products can be powder coated to suit your colour requirements. If you have an existing non-compliant handrail then the MasterKlamp Assist products can be readily used in order to gain DDA compliance, they are ideal for retro-fitting.

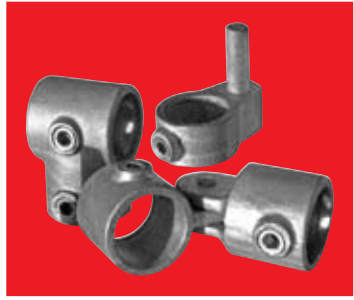
MASTERKLAMP ALUMINIUM

Your light weight, durable and highly corrosion resistant pipe clamp. Where your requirements are for an easy, quick to install and aesthetically pleasing pipe assembly, you will find the advantages of MASTERKLAMP outweigh all other pipe assembly options.

Manufactured from a high grade aluminium silicon magnesium alloy, MASTERKLAMP ALUMINIUM clamps are both technologically advanced and affordable.

MASTERKLAMP

HIGH QUALITY PIPE FITTINGS



MASTERKLAMP suits pipe given in both nominal bore (NB) and outside diameter (OD). When ordering your MASTERKLAMP all sizes are given in OD.

Pipe Information	O.D.	N.B.	N.B.
	21.3mm	15mm	1/2"
	26.9mm	20mm	3/4"
	33.7mm	25mm	1"
	42.4mm	32mm	1 1/4"
	48.3mm	40mm	1 1/2"
	60.3mm	50mm	2"

MASTERKLAMP is manufactured to suit schedule 40 steel pipe or similar.

Due to MASTERKLAMP development we strongly recommend that you view www.masterklamp.com for the latest products, news and useful information.

AVAILABLE FROM:

Kazed Industrial Solutions
4 Monterey Road
Dandenong, Victoria. 3175
Phone: 1 800 236 337
Fax: 03 9706 4007
Email: sales@kazed.com.au
Web: www.kazed.com.au
A.B.N. 34 134 243 588

